

# Grain Monitoring Program

## Weekly Performance Update

January 27, 2026

For Grain Week 24 2025-26 CY  
January 12, 2026 to January 18, 2026

### Summary

Summary		Week 24	Week 23	Var. from Last Year	
1. Stocks in Store ('000 tonnes)					
Country Elevators	↑	3,453.7	3,204.0	-5%	
% of Working Capacity		65%	60%		
Terminal Elevators	↓	1,308.9	1,339.8	13%	
% of Working Capacity		68%	70%		
2. Country Deliveries ('000 tonnes)					
Country Deliveries	↓	1,225.5	1,270.5	5%	
3. Port Performance (Cars)					
Vancouver Unloads	↑	6,665	6,137	11%	
Prince Rupert Unloads	↑	1,383	686	27%	
Churchill Unloads	—	0	0	n/a	
Thunder Bay Unloads	↓	1	781	-100%	
Total Weekly Unloads	↑	8,049	7,604	8%	
4-Week Rolling Average	↓	7,583	7,920	-4%	
Var. to 4-Week Rolling Average		6%	-4%		
YTD Unloads		225,239	217,190	1%	
Weekly Out-of-Car Time	↓	7.1%	9.3%	-53.8%	
4. Terminal Shipments Year-to-Date ('000 tonnes)					
Vancouver	↑	14,622.1	13,838.8	1%	
Prince Rupert	↑	2,294.0	2,126.0	2%	
Churchill	—	0.0	0.0	n/a	
Thunder Bay	—	4,082.2	4,082.2	1%	
Total Western Canada	↑	20,998.3	20,047.0	1%	
5. Vessels as at Jan 25, 2026		Week 25	Week 24	Var. from Last Year	
Vancouver	Vessel Lineup in port	↓	21	27	-16%
	Vessels Cleared	↑	14	13	27%
	Vessels Arrived	↓	8	15	60%
Pr. Rupert	Vessel Lineup in port	↑	3	2	-50%
	Vessels Cleared	↓	1	3	-50%
	Vessels Arrived	↓	2	3	-33%
Vessels Inbound Jan 26, 2026 to Feb 01, 2026 (Week 26)					
Vancouver		23			
Prince Rupert		3			
6. Weather		Week 24 Actual	Week 25 Actual	Week 26 Forecast	
Winnipeg Days < -25°C		0	4	2	
Edmonton Days < -25°C		0	0	0	
Vancouver Days Precip > 8mm		1	0	5	

### 1. Stocks in Store: (Page 2)

- Country stocks increased to 3.45 MMT in Week 24 utilizing 65% of the system's working capacity. Space in primary elevators is good.
- Total western port terminal stocks decreased to 1.31 MMT in Week 24, utilizing 68% of the working capacity. Space at Vancouver is limited.

### 2. Country Deliveries: (Page 3)

- Deliveries to primary elevators were 1.23 MMT in Week 24.

### 3. Port Performance: (Pages 3-5)

- Total western port unloads were 6% higher than the 4-week moving average and 8% higher than Week 24 last year.
- West Coast unloads were 8,048 cars (Vancouver 6,665 and Prince Rupert 1,383), 20% higher than the 4-week moving average and 13% higher than Week 24 last year.
- Thunder Bay had 1 unload, 100% lower than the 4-week moving average and 100% lower than Week 24 last year.
- The total average terminal out-of-car time (OCT) decreased to 7.1% from 9.3% the previous week. The OCT for Week 24 was 5.9% at Vancouver and 14.3% at Prince Rupert.

### 4. Shipments: (Page 5)

- Year-to-date Western Canadian shipments from port terminal elevators at Week 24 are 1% higher than the same period last year and 5% higher than the 3-year average.
- The Great Lakes – St. Lawrence Seaway System is closed until March 2026.

### 5. Vessels: (Page 5)

- Vancouver vessel lineup for Week 25 2025-26 decreased to 21 vessels (The current one-year average at Vancouver is 21 vessels). Of the 21, 9 were at berth, 9 were anchored at English Bay, 2 were anchored at Burrard Inlet, and 1 was anchored at Vancouver Island.
- Prince Rupert vessel lineup for Week 25 2025-26 increased to 3 vessels (The current one-year average at Prince Rupert is 3 vessels).
- Vessels cleared from Vancouver was 14 and from Prince Rupert was 1 in Week 25 2025-26.

### 6. Weather: (Page 6)

- Temperatures across the prairies are forecasted to drop below -25C regionally. Railways may invoke their winter operating plans where required.
- Vancouver is forecast to receive high precipitation during Week 26 which may impact the ability to load grain into vessels.

# 1. Stocks in Store

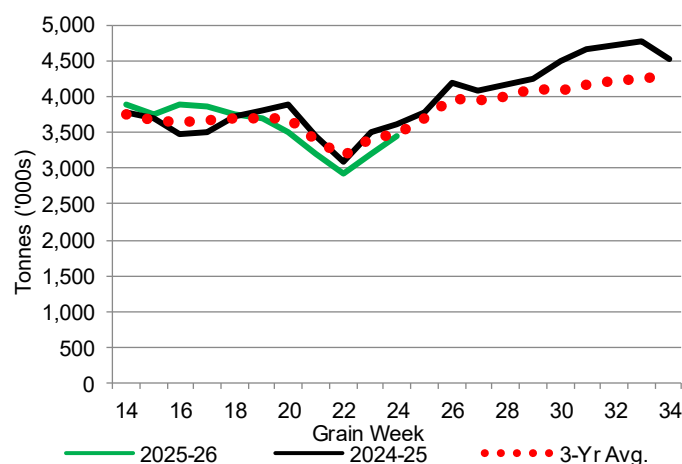
1-A1 Country Stocks ('000 tonnes) – Week 24

	MB	SK	AB	BC	Total
2025-26	691.5	1,544.0	1,206.9	11.3	3,453.7
2024-25	738.6	1,788.0	1,084.3	14.3	3,625.2
3-Yr Avg.	713.7	1,627.1	1,132.1	14.9	3,487.9
Var % - LY	-6%	-14%	11%	-21%	-5%
Var % 3-Yr Avg.	-3%	-5%	7%	-24%	-1%
Storage Capacity	1,631.3	4,053.8	2,492.3	30.6	8,208.0
Estimated Working Capacity	1,060.3	2,635.0	1,620.0	19.9	5,335.2
25-26 % of Wkg Cap	65%	59%	75%	57%	65%

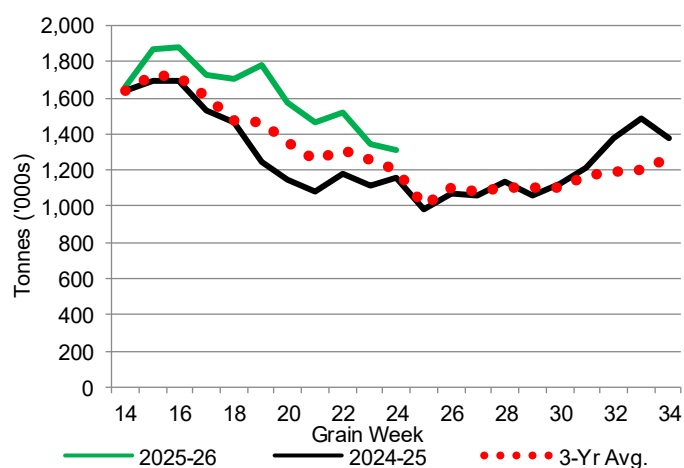
1-B1 Terminal Stocks ('000 tonnes) – Week 24

	VC	PR	West Coast	CH	TB	Total
2025-26	850.3	118.0	968.3	0.7	339.9	1,308.9
2024-25	723.2	98.8	822.0	0.7	335.3	1,158.0
3-Yr Avg.	774.9	125.5	900.4	0.7	305.8	1,206.9
Var % - LY	18%	19%	18%	0%	1%	13%
Var % 3-Yr Avg.	10%	-6%	8%	0%	11%	8%
Storage Capacity	1,275.5	209.5	1,485.0	140.0	1,127.5	2,752.5
Estimated Working Capacity	892.9	146.7	1,039.6	98.0	789.2	1,926.8
25-26 % of Wkg Cap	95%	80%	93%	1%	43%	68%

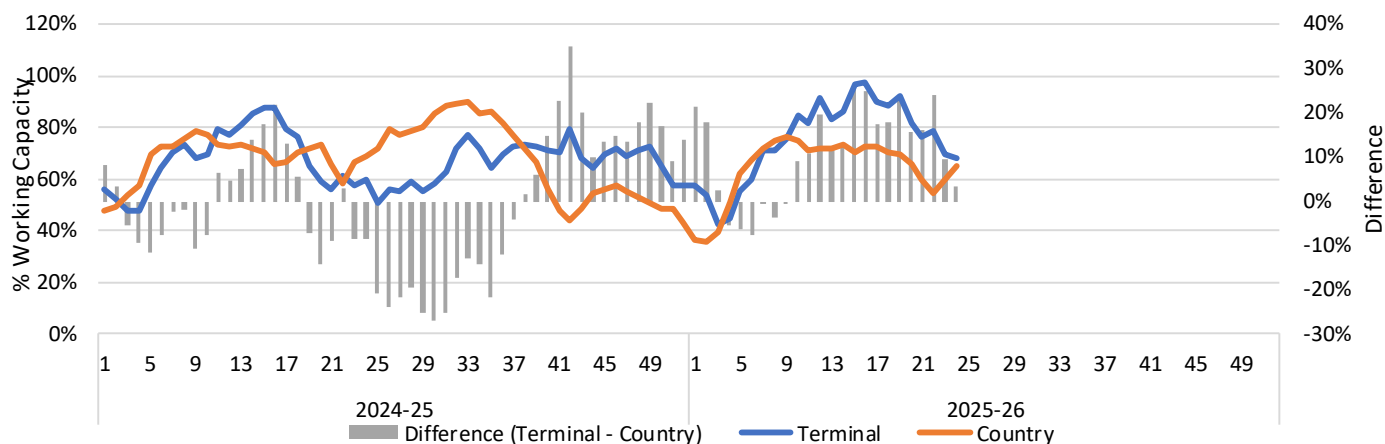
1-A2 Weekly Country Stocks in Store



1-B2 Weekly Terminal Stocks in Store



1-C Weekly Stock Balance

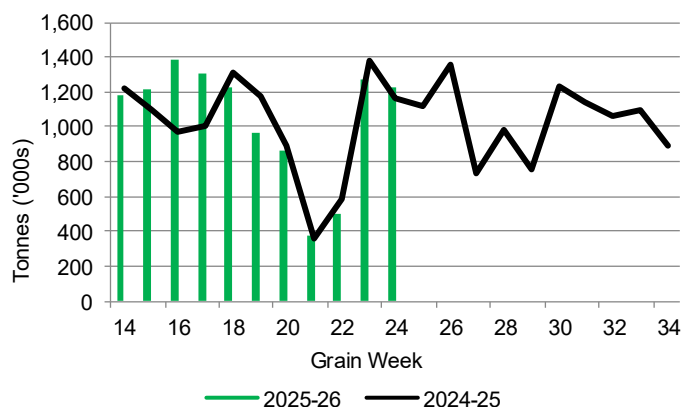


## 2. Country Deliveries

2-A Country Deliveries ('000 tonnes) – Week 24

	MB	SK	AB	BC	Total
2025-26	142.2	620.1	455.9	7.3	1,225.5
2024-25	171.2	603.4	389.3	5.8	1,169.7
4 Wk Avg	106.6	461.9	269.7	3.6	841.8
Var % to Last Year	-17%	3%	17%	26%	5%
Var % To 4 Wk Avg	33%	34%	69%	103%	46%

2-B 2025-26 Weekly Country Deliveries



## 3. Port Performance

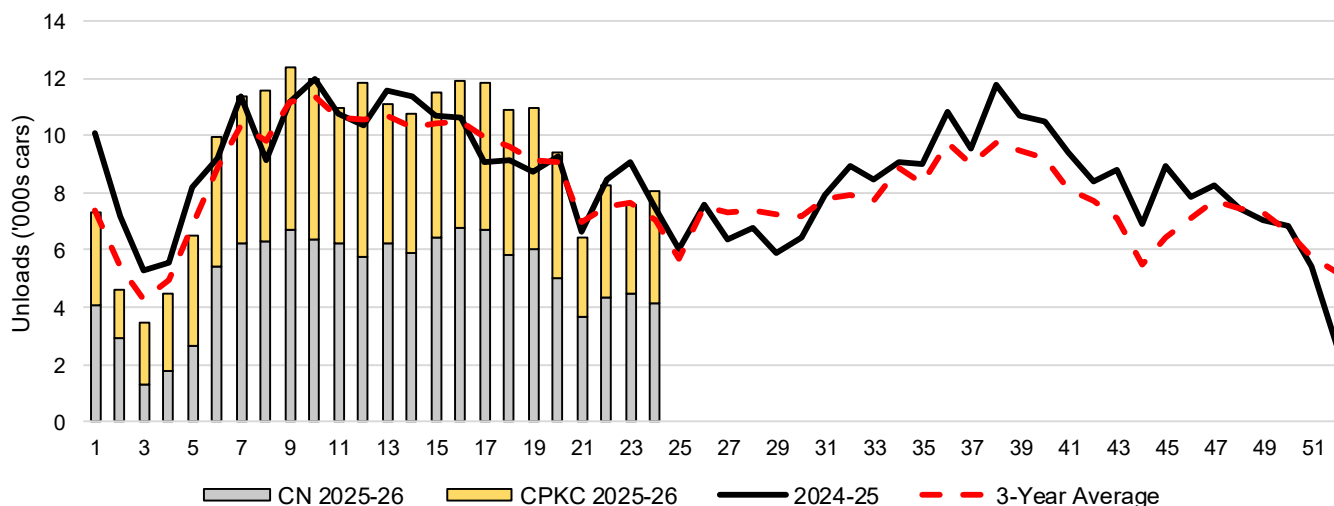
3-A Weekly Unloads by Port (Cars) – This Year for Week 24, 4-Week Moving Average and Variances

	Vancouver	Prince Rupert	West Coast	Thunder Bay	Churchill	Total
2025-26	6,665	1,383	8,048	1	-	8,049
2024-25	6,023	1,093	7,116	322	n/a	7,438
4-Wk Avg.	5,702	1,029	6,731	853	-	7,583
Var % to Last Year	11%	27%	13%	-100%	n/a	8%
Var % to 4-Wk Avg.	17%	34%	20%	-100%	n/a	6%

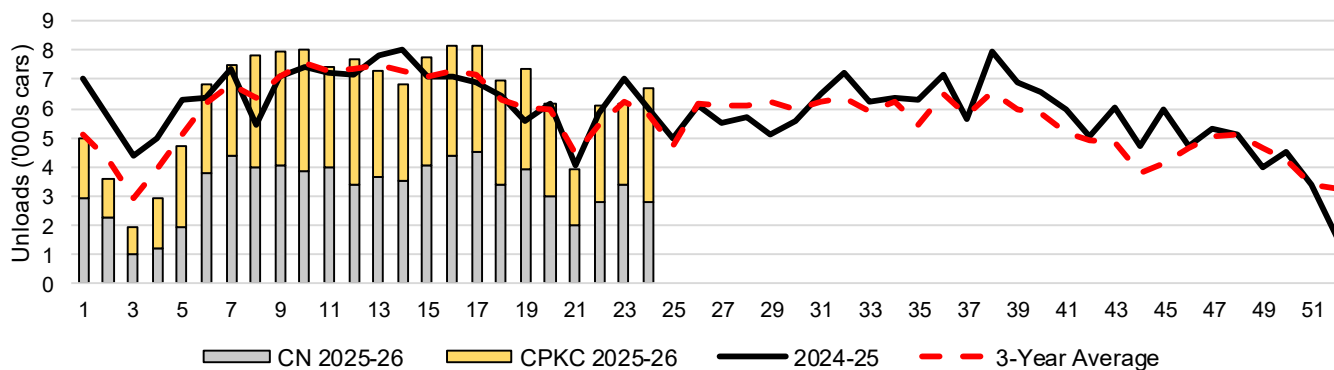
3-B Terminal Unloads by Port – This Year-to-Date as at Week 24 and Variances

YTD Unloads (cars)	Vancouver	Prince Rupert	West Coast	Thunder Bay	Churchill	Total
2025-26	152,826	23,711	176,537	48,702	-	225,239
2024-25	154,282	23,248	177,530	45,057	-	222,587
3-Yr Avg	146,379	19,561	165,941	44,684	-	210,625
Var % to Last Year	-1%	2%	-1%	8%	n/a	1%
Var % to 3-Yr Avg	4%	21%	6%	9%	n/a	7%
YTD Unloads ('000 tonnes)						
2025-26	14,735.0	2,298.4	17,033.4	4,689.6	-	21,723.0
2024-25	14,647.6	2,237.3	16,884.9	4,351.8	-	21,236.7
3-Yr Avg.	14,012.7	1,892.6	15,905.3	4,310.7	-	20,216.0
Var % to Last Year	1%	3%	1%	8%	n/a	2%
Var % to 3-Yr Avg.	5%	21%	7%	9%	n/a	7%

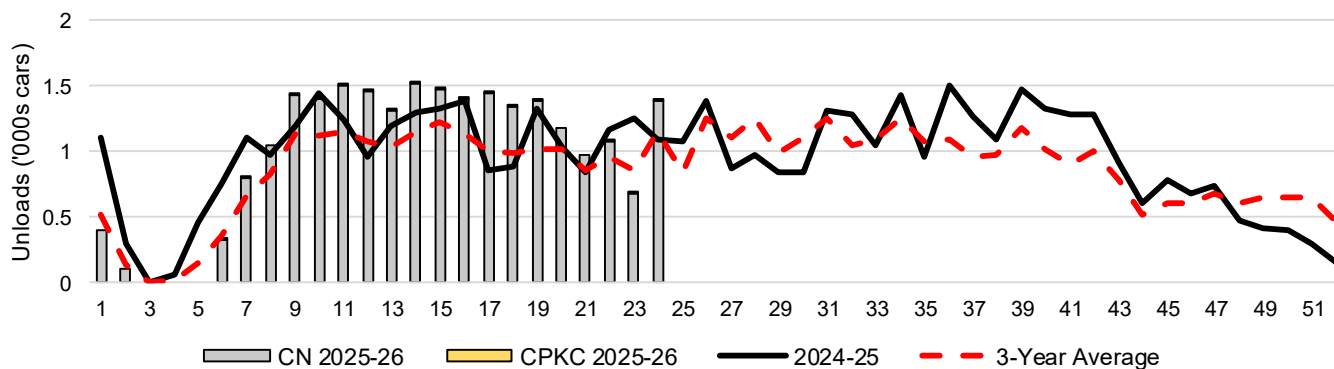
3-C Western Port Terminal Unloads (cars), Total by Carrier, This Year vs. Last Year and the 3-Year Average



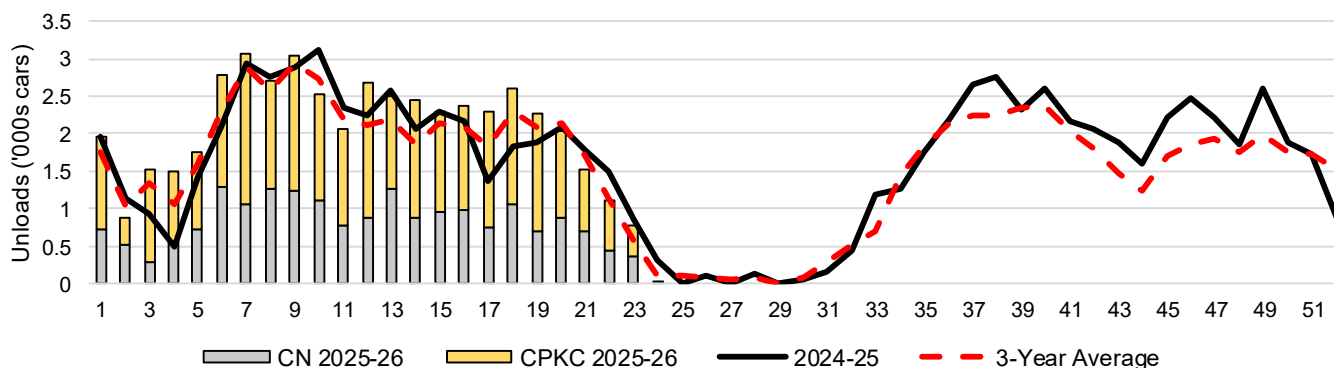
### 3-D Vancouver Terminal Unloads (cars), Total by Carrier, This Year vs. Last Year and the 3-Year Average



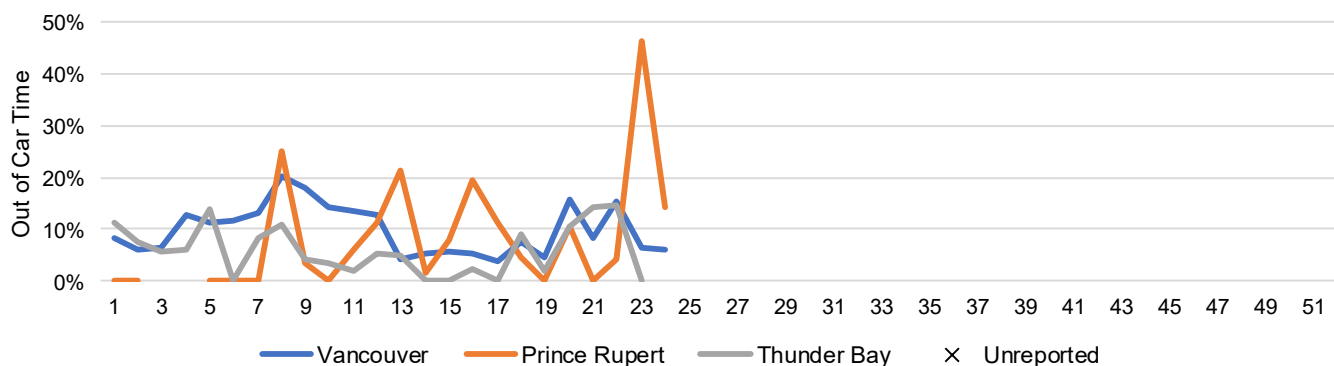
### 3-E Prince Rupert Terminal Unloads (cars), Total by Carrier, This Year vs. Last Year and the 3-Year Average



### 3-F Thunder Bay Terminal Unloads (cars), Total by Carrier, This Year vs. Last Year and the 3-Year Average



### 3-G Weekly Out-of-Car Time (% of hours out-of-cars / total hours working)



Out-of-car time is measured weekly and uses data from terminal elevators on the total number of hours the facilities are open & staffed (including overtime hours) and the corresponding number of hours that terminals have no railcars available to unload. The measure is expressed as a percentage (hours without cars to the total number of hours working).

### 3-H Monthly Unloads (cars) – This Year vs. Last Year and the 3-Year Average to Week 22 2025-26

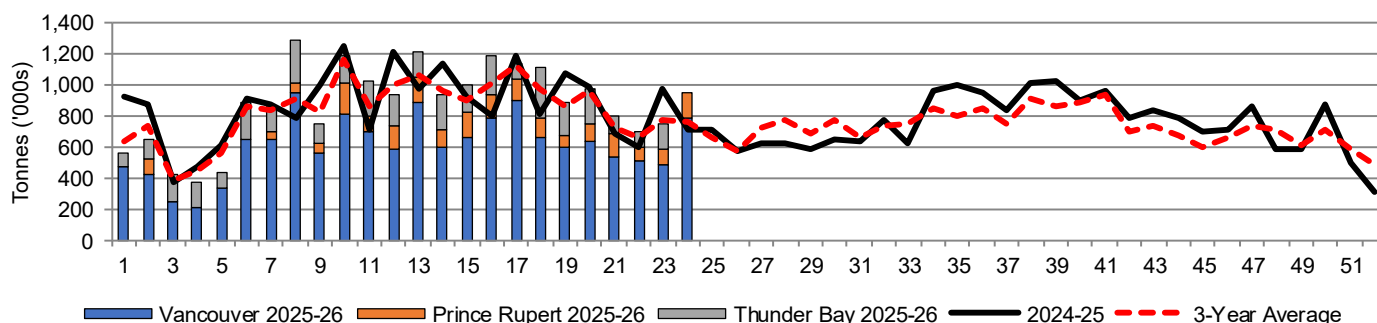
Months	Aug	Sep	Oct	Nov	Dec	Jan	Feb	Mar	Apr	May	Jun	Jul
Weeks	1-4	5-8	9-13	14-17	18-22	23-26	27-30	31-34	35-39	40-43	44-47	48-52
2025-26	19,847	39,408	58,289	46,070	45,972	-	-	-	-	-	-	-
2024-25	28,103	37,927	55,870	41,829	42,324	30,188	25,580	34,401	51,849	37,116	31,941	29,346
3-Yr Avg.	22,036	35,860	54,460	41,189	42,370	28,601	29,124	32,312	46,300	32,165	26,762	33,141
Var % to Last Year	-29%	4%	4%	10%	9%							
Var % to 3-Yr Avg.	-10%	10%	7%	12%	9%							

## 4. Shipments

### 4-A Shipments from Port Terminals ('000 tonnes) – This Year-to-Date as at Week 24 and Variance to Last Year-to-Date

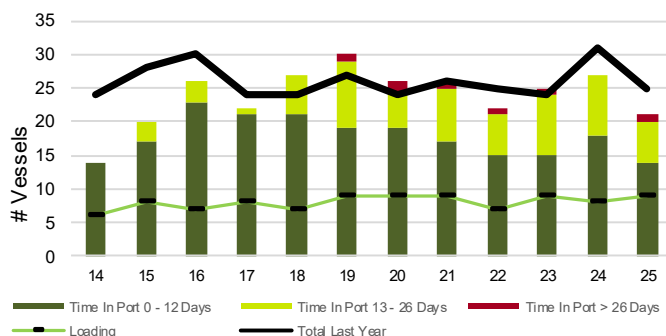
	Vancouver	Prince Rupert	West Coast	Thunder Bay	Churchill	Total
2025-26	14,622.1	2,294.0	16,916.1	4,082.2	-	20,998.3
2024-25	14,499.7	2,260.2	16,759.9	4,044.5	-	20,804.4
3-Yr Avg.	14,143.4	1,870.0	16,013.4	3,945.9	-	19,959.3
Var % to Last Year	1%	1%	1%	1%	n/a	1%
Var % to 3-Yr Avg.	3%	23%	6%	3%	n/a	5%

### 4-B Weekly Shipments ('000 tonnes) from Port Terminals – This Year vs Last Year and the 3-Year Average

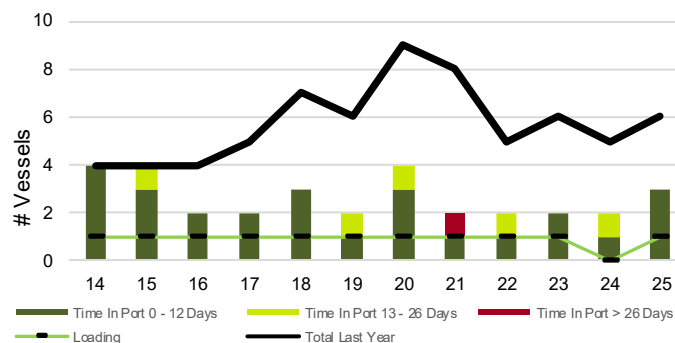


## 5. Vessels

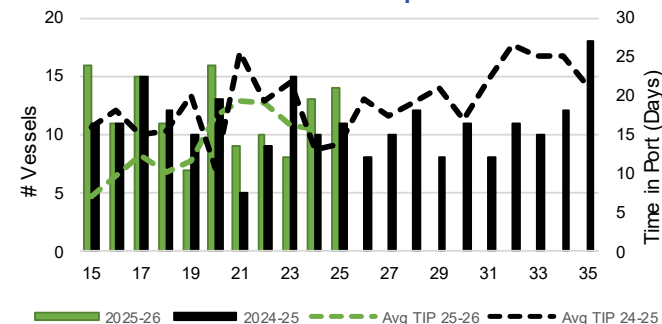
### 5-A Vessel Lineup at Vancouver as of Week 25 2025-26



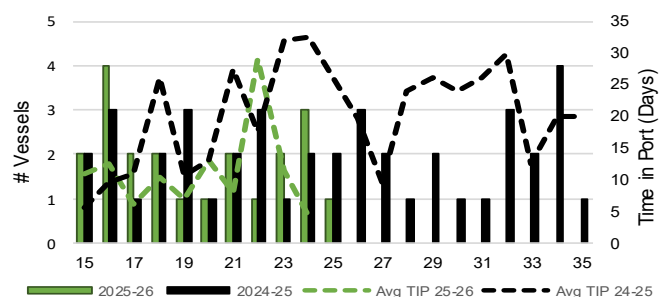
### 5-C Vessel Lineup at Prince Rupert as of Week 25 2025-26



### 5-B Vessels Cleared at Vancouver up to Week 25 2025-26



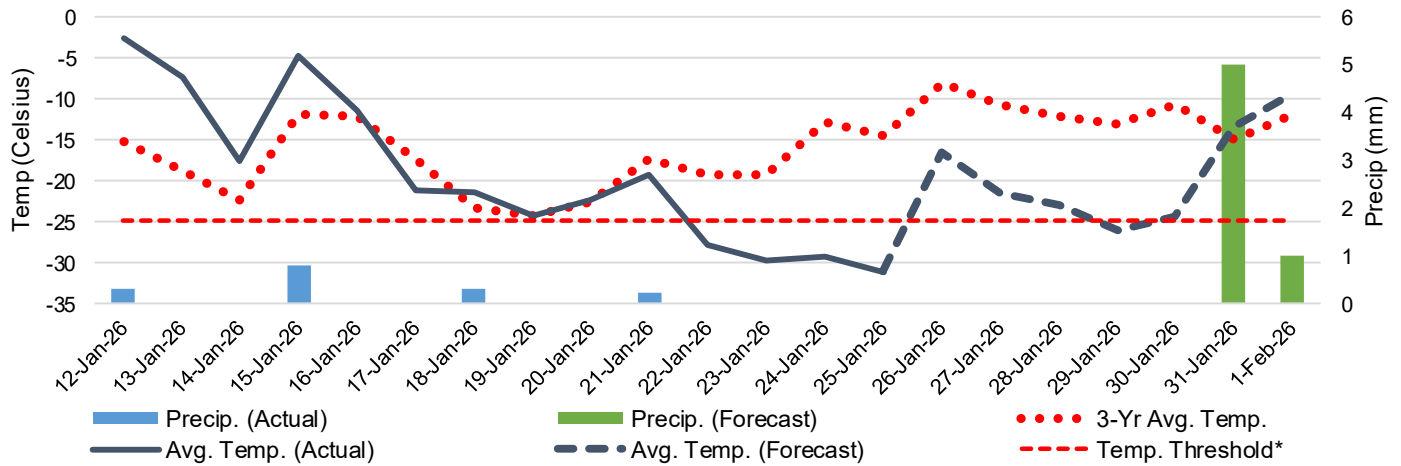
### 5-D Vessels Cleared at Prince Rupert up to Week 25 2025-26



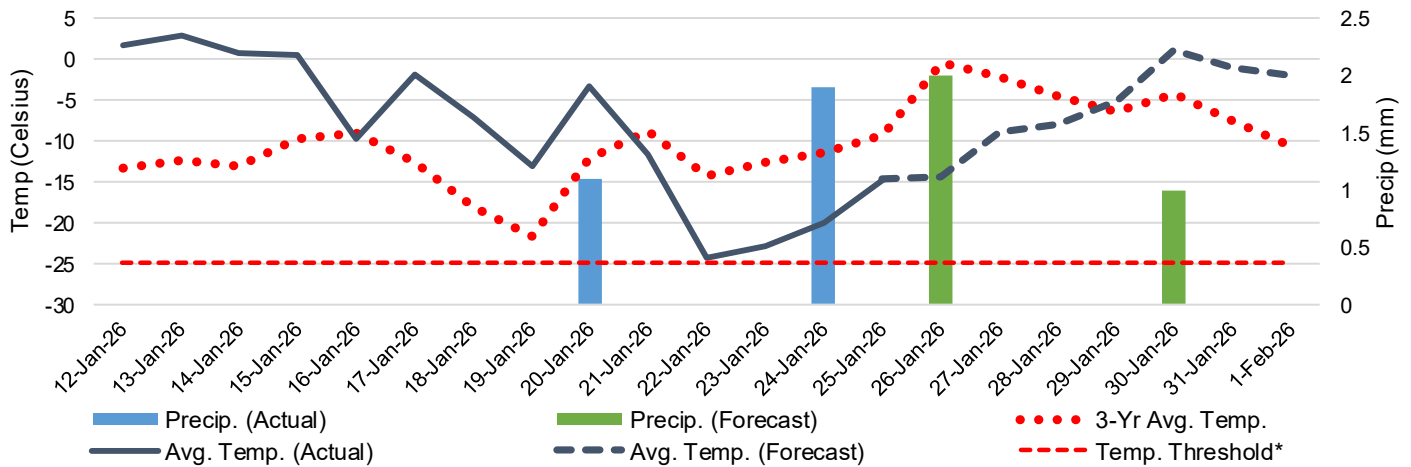
Note: The 'Time in Port' measure for 5-A and 5-C is calculated as how long each vessel in the lineup has been in port as at Sunday 23:59 of that grain week. The 'Avg Time in Port (TIP)' measure for 5-B and 5-D is the average number of days that all vessels which cleared that week were in port. These measures use vessel data provided by the BC Chamber of Shipping and Pacific Pilotage Authority.

## 6. Weather

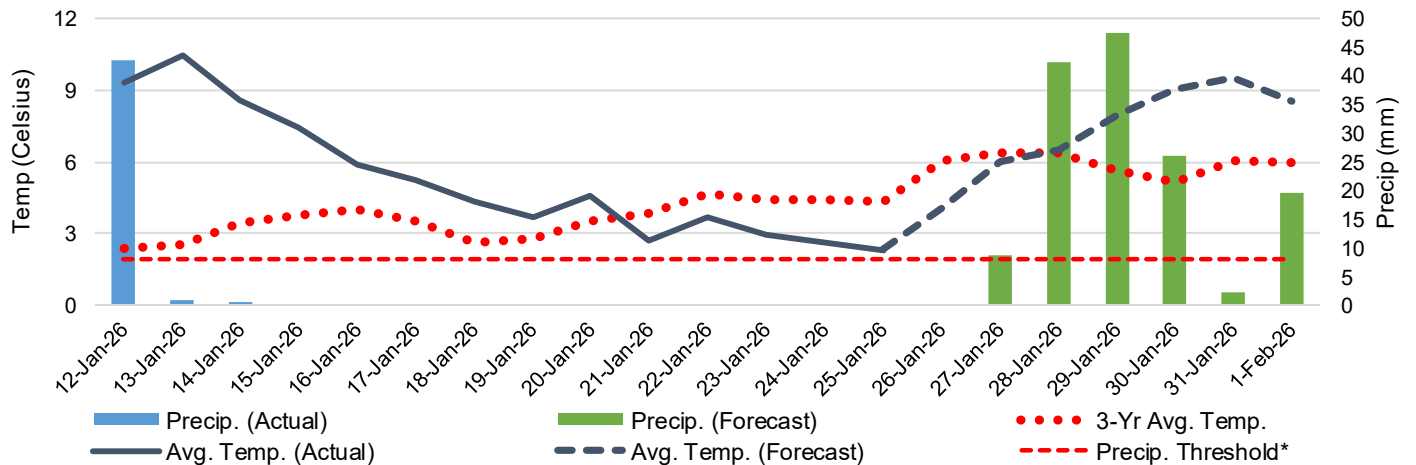
6-A Actual and Forecasted Weather at Winnipeg up to Week 26 2025-26



6-B Actual and Forecasted Weather at Edmonton up to Week 26 2025-26



6-C Actual and Forecasted Weather at Vancouver up to Week 26 2025-26



\*Note: Precip Threshold refers to 8mm of rain. At this level of precipitation, vessel loading may be delayed. The duration of the delay will be dependent on the ship, the duration of rainfall, and the amount of precipitation. 8mm is a general guideline and is not meant to be a definitive limit.  
Source: Environment and Climate Change Canada, The Weather Network (Forecast)