

# Grain Monitoring Program

## Weekly Performance Update

January 13, 2026

For Grain Week 22 2025-26 CY  
December 29, 2025 to January 04, 2026

### Summary

	Week 22	Week 21	Var. from Last Year
<b>1. Stocks in Store ('000 tonnes)</b>			
Country Elevators	↓ 2,915.8	3,204.2	-6%
% of Working Capacity	55%	60%	
Terminal Elevators	↑ 1,513.4	1,463.9	28%
% of Working Capacity	79%	76%	
<b>2. Country Deliveries ('000 tonnes)</b>			
Country Deliveries	↑ 501.1	369.9	-15%
<b>3. Port Performance (Cars)</b>			
Vancouver Unloads	↑ 6,028	3,950	4%
Prince Rupert Unloads	↑ 1,077	969	-7%
Churchill Unloads	— 0	0	n/a
Thunder Bay Unloads	↓ 525	1,195	-65%
Total Weekly Unloads	↑ 7,630	6,114	-10%
4-Week Rolling Average	↓ 8,320	9,138	0%
Var. to 4-Week Rolling Average	-8%	-33%	
YTD Unloads	207,795	200,165	1%
Weekly Out-of-Car Time	↑ 13.9%	9.2%	252.3%
<b>4. Terminal Shipments Year-to-Date ('000 tonnes)</b>			
Vancouver	↑ 13,352.5	12,844.8	2%
Prince Rupert	↑ 2,019.2	1,935.4	1%
Churchill	— 0.0	0.0	n/a
Thunder Bay	↑ 3,922.2	3,822.8	-1%
Total Western Canada	↑ 19,293.9	18,603.0	1%
<b>5. Vessels as at Jan 11, 2026</b>			
	Week 23	Week 22	Var. from Last Year
Vancouver	Vessel Lineup in port	↑ 25	22 4%
	Vessels Cleared	↓ 8	10 -47%
	Vessels Arrived	↑ 11	6 -21%
Pr. Rupert	Vessel Lineup in port	— 2	2 -67%
	Vessels Cleared	↑ 2	1 100%
	Vessels Arrived	↑ 2	1 0%
<b>Vessels Inbound Jan 12, 2026 to Jan 18, 2026 (Week 24)</b>			
Vancouver	19		
Prince Rupert	3		
<b>6. Weather</b>			
	Week 22 Actual	Week 23 Actual	Week 24 Forecast
Winnipeg Days < -25°C	0	0	0
Edmonton Days < -25°C	0	0	0
Vancouver Days Precip > 8mm	1	4	1

#### 1. Stocks in Store: (Page 2)

- Country stocks decreased to 2.92 MMT in Week 22 utilizing 55% of the system's working capacity. Space in primary elevators is good.
- Total western port terminal stocks increased to 1.51 MMT in Week 22, utilizing 79% of the working capacity. Space at Vancouver is limited.

#### 2. Country Deliveries: (Page 3)

- Deliveries to primary elevators were 0.50 MMT in Week 22.

#### 3. Port Performance: (Pages 3-5)

- Total western port unloads were 8% lower than the 4-week moving average and 10% lower than Week 22 last year.
- West Coast unloads were 7,105 cars (Vancouver 6,028 and Prince Rupert 1,077), 1% higher than the 4-week moving average and 2% higher than Week 22 last year.
- Thunder Bay had 525 unloads, 59% lower than the 4-week moving average and 65% lower than Week 22 last year.
- The total average terminal out-of-car time (OCT) increased to 13.9% from 9.2% the previous week. The OCT for Week 22 was 15.3% at Vancouver, 4.2% at Prince Rupert, and 14.7% at Thunder Bay.

#### 4. Shipments: (Page 5)

- Year-to-date Western Canadian shipments from port terminal elevators at Week 22 are 1% higher than the same period last year and 5% higher than the 3-year average.
- The Great Lakes – St. Lawrence Seaway System closing of navigation dates, with case-by-case permissions for final clearance, are as follows:
  - Montreal – Lake Ontario Section: Dec 24 (clear by Jan 05)
  - Welland Canal: Dec 26 (clear by Jan 10)
  - Sault Ste. Marie Locks and Canal: Jan 15

#### 5. Vessels: (Page 5)

- Vancouver vessel lineup for Week 23 2025-26 increased to 25 vessels (The current one-year average at Vancouver is 21 vessels). Of the 25, 9 were at berth, 12 were anchored at English Bay, and 4 were anchored at Vancouver Island.
- Prince Rupert vessel lineup for Week 23 2025-26 remained at 2 vessels (The current one-year average at Prince Rupert is 3 vessels).
- Vessels cleared from Vancouver was 8 and from Prince Rupert was 2 in Week 23 2025-26.

#### 6. Weather: (Page 6)

- Temperatures across the prairies are forecasted to remain above -25°C in Week 23. Railways are not expected to invoke their winter operating plans.

# 1. Stocks in Store

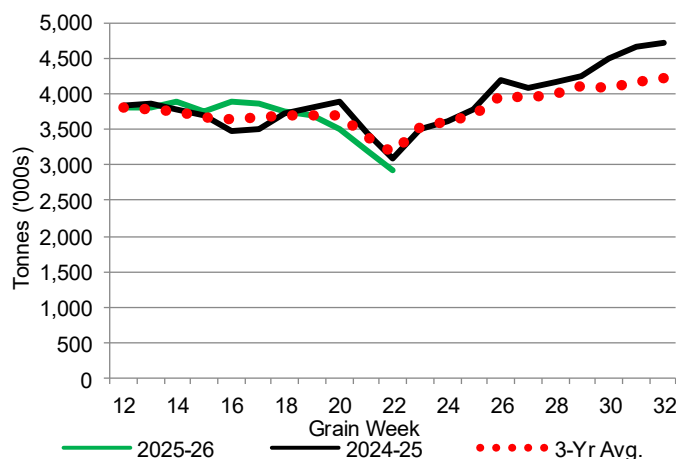
1-A1 Country Stocks ('000 tonnes) – Week 22

	MB	SK	AB	BC	Total
2025-26	621.0	1,327.5	962.4	4.9	2,915.8
2024-25	664.1	1,598.8	822.3	11.9	3,097.1
3-Yr Avg.	667.2	1,513.9	974.5	13.5	3,169.1
Var % - LY	-6%	-17%	17%	-59%	-6%
Var % 3-Yr Avg.	-7%	-12%	-1%	-64%	-8%
Storage Capacity	1,631.3	4,053.8	2,492.3	30.6	8,208.0
Estimated Working Capacity	1,060.3	2,635.0	1,620.0	19.9	5,335.2
25-26 % of Wkg Cap	59%	50%	59%	25%	55%

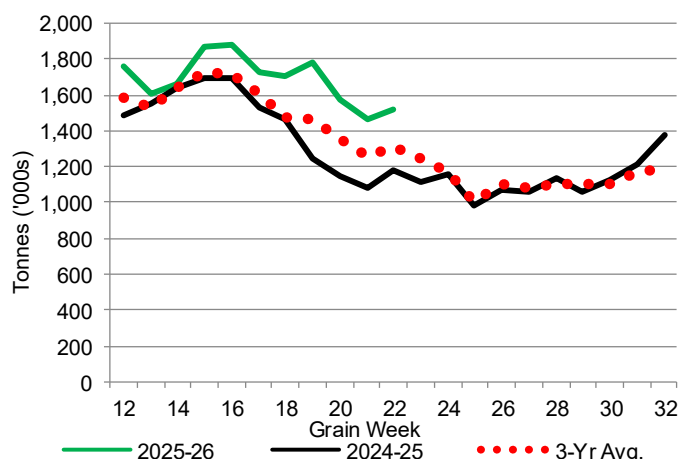
1-B1 Terminal Stocks ('000 tonnes) – Week 22

	VC	PR	West Coast	CH	TB	Total
2025-26	934.7	112.0	1,046.7	0.7	466.0	1,513.4
2024-25	705.4	107.7	813.1	0.7	371.3	1,185.1
3-Yr Avg.	798.7	114.5	913.1	0.7	392.3	1,306.1
Var % - LY	33%	4%	29%	0%	26%	28%
Var % 3-Yr Avg.	17%	-2%	15%	0%	19%	16%
Storage Capacity	1,275.5	209.5	1,485.0	140.0	1,127.5	2,752.5
Estimated Working Capacity	892.9	146.7	1,039.6	98.0	789.2	1,926.8
25-26 % of Wkg Cap	105%	76%	101%	1%	59%	79%

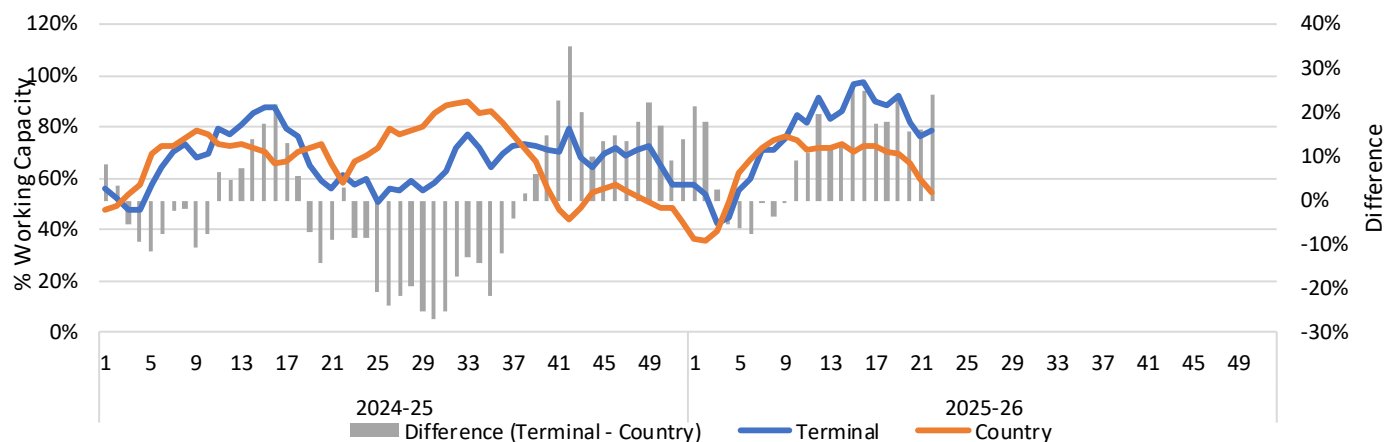
1-A2 Weekly Country Stocks in Store



1-B2 Weekly Terminal Stocks in Store



1-C Weekly Stock Balance

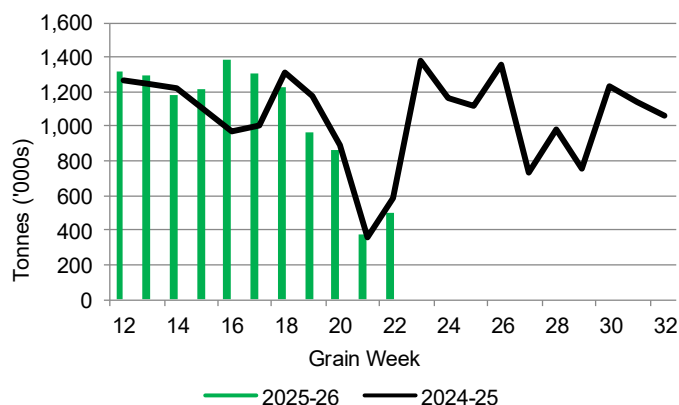


## 2. Country Deliveries

2-A Country Deliveries ('000 tonnes) – Week 22

	MB	SK	AB	BC	Total
2025-26	55.3	296.6	149.0	0.2	501.1
2024-25	112.9	318.4	151.9	4.5	587.7
4 Wk Avg	104.2	374.0	191.9	3.0	673.1
Var % to Last Year	-51%	-7%	-2%	-96%	-15%
Var % To 4 Wk Avg	-47%	-21%	-22%	-93%	-26%

2-B 2025-26 Weekly Country Deliveries



## 3. Port Performance

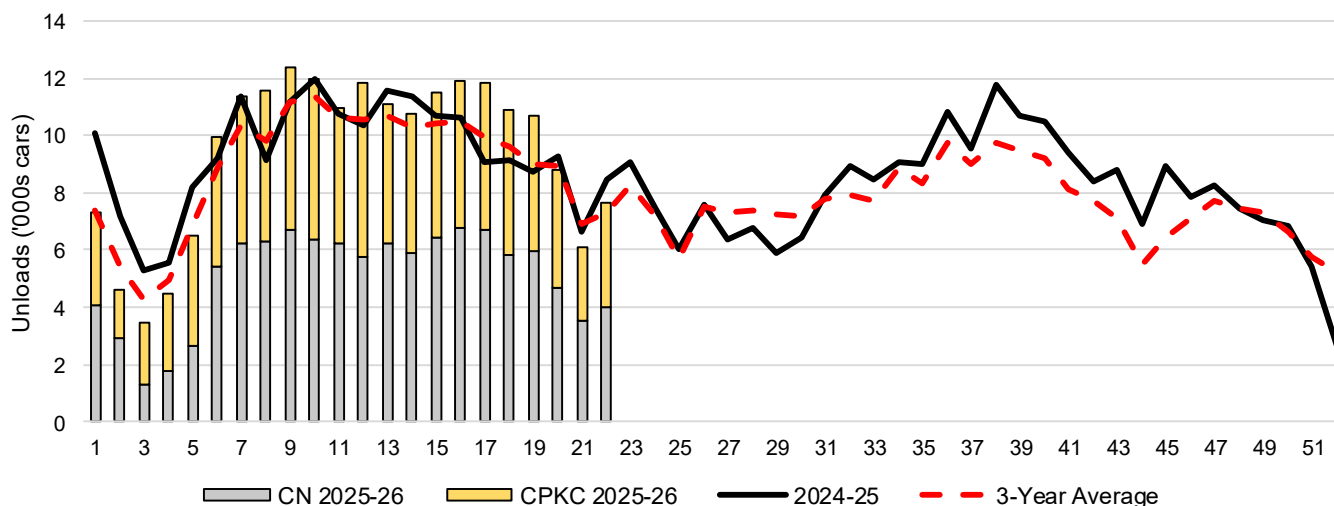
3-A Weekly Unloads by Port (Cars) – This Year for Week 22, 4-Week Moving Average and Variances

	Vancouver	Prince Rupert	West Coast	Thunder Bay	Churchill	Total
2025-26	6,028	1,077	7,105	525	-	7,630
2024-25	5,813	1,164	6,977	1,489	n/a	8,466
4-Wk Avg.	5,888	1,155	7,043	1,277	-	8,320
Var % to Last Year	4%	-7%	2%	-65%	n/a	-10%
Var % to 4-Wk Avg.	2%	-7%	1%	-59%	n/a	-8%

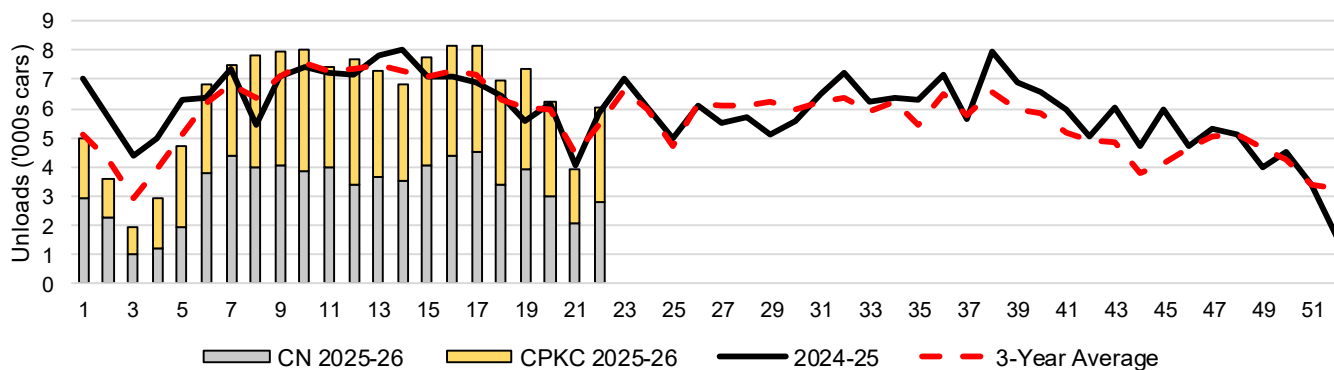
3-B Terminal Unloads by Port – This Year-to-Date as at Week 22 and Variances

YTD Unloads (cars)	Vancouver	Prince Rupert	West Coast	Thunder Bay	Churchill	Total
2025-26	140,048	21,642	161,690	46,105	-	207,795
2024-25	141,260	20,901	162,161	43,892	-	206,053
3-Yr Avg	134,371	17,550	151,921	43,396	-	195,318
Var % to Last Year	-1%	4%	0%	5%	n/a	1%
Var % to 3-Yr Avg	4%	23%	6%	6%	n/a	6%
YTD Unloads ('000 tonnes)						
2025-26	13,509.5	2,098.3	15,607.8	4,445.2	-	20,053.0
2024-25	13,409.4	2,011.3	15,420.7	4,243.0	-	19,663.7
3-Yr Avg.	12,861.9	1,698.1	14,560.1	4,190.0	-	18,750.1
Var % to Last Year	1%	4%	1%	5%	n/a	2%
Var % to 3-Yr Avg.	5%	24%	7%	6%	n/a	7%

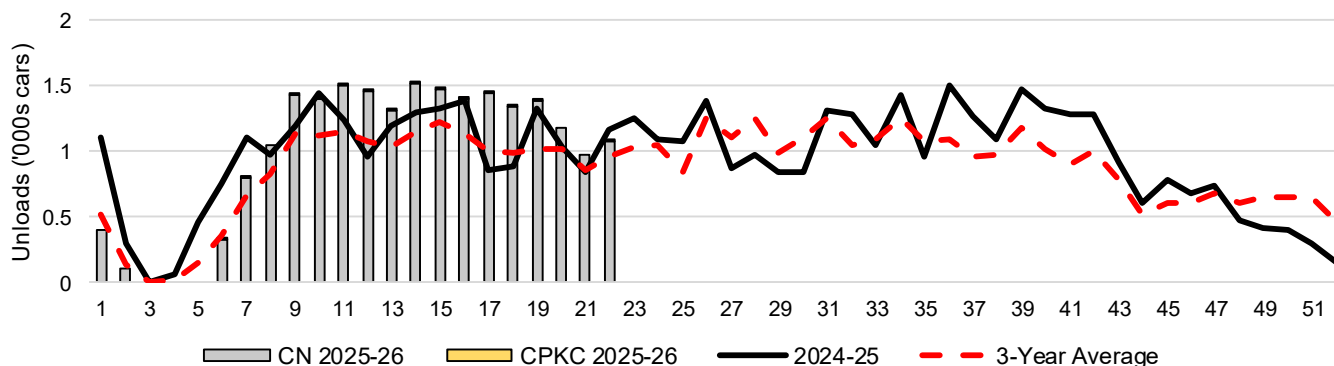
3-C Western Port Terminal Unloads (cars), Total by Carrier, This Year vs. Last Year and the 3-Year Average



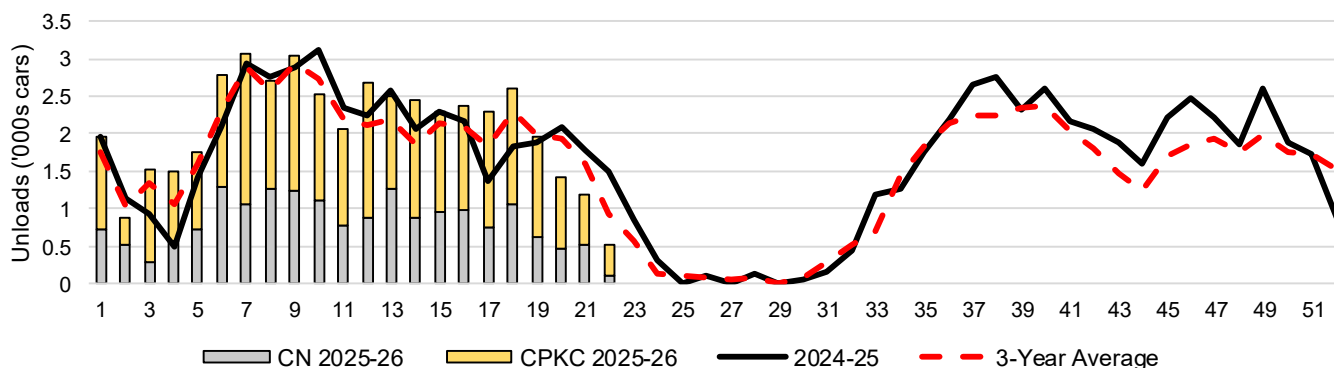
### 3-D Vancouver Terminal Unloads (cars), Total by Carrier, This Year vs. Last Year and the 3-Year Average



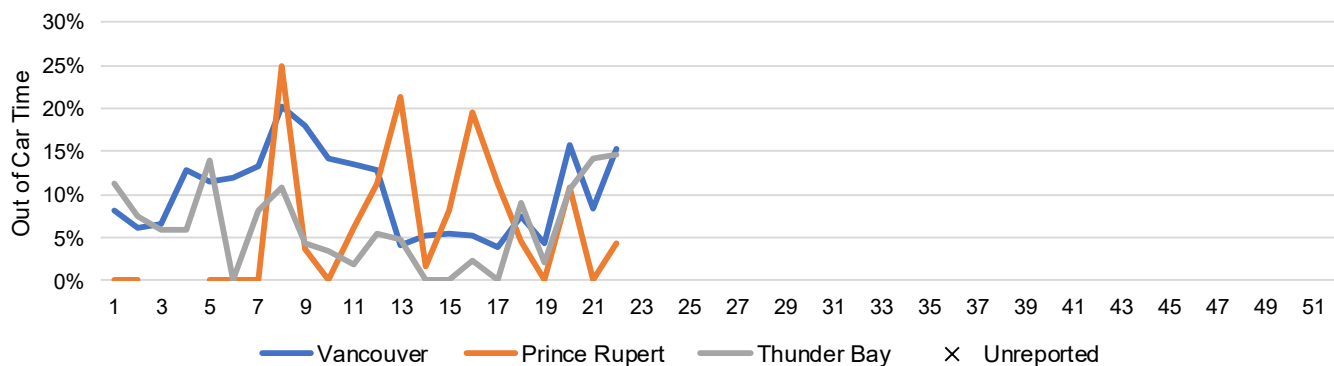
### 3-E Prince Rupert Terminal Unloads (cars), Total by Carrier, This Year vs. Last Year and the 3-Year Average



### 3-F Thunder Bay Terminal Unloads (cars), Total by Carrier, This Year vs. Last Year and the 3-Year Average



### 3-G Weekly Out-of-Car Time (% of hours out-of-cars / total hours working)



Out-of-car time is measured weekly and uses data from terminal elevators on the total number of hours the facilities are open & staffed (including overtime hours) and the corresponding number of hours that terminals have no railcars available to unload. The measure is expressed as a percentage (hours without cars to the total number of hours working).

### 3-H Monthly Unloads (cars) – This Year vs. Last Year and the 3-Year Average to Week 22 2025-26

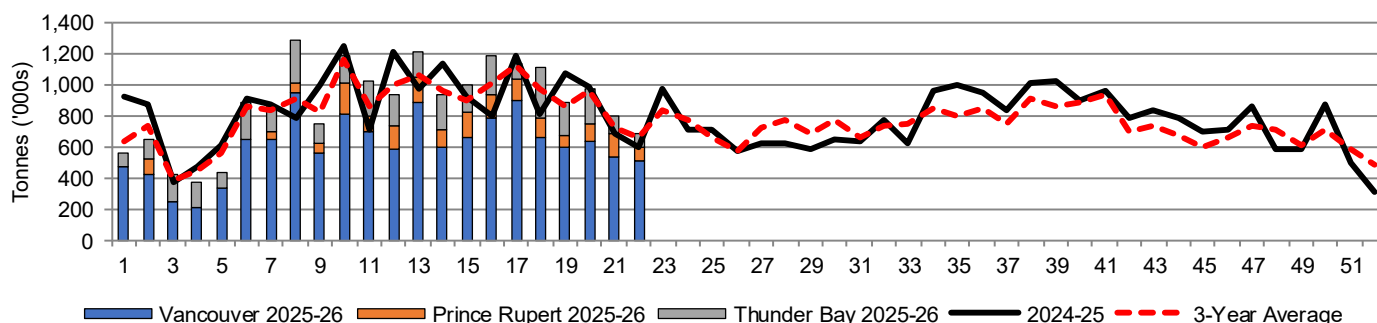
Months	Aug	Sep	Oct	Nov	Dec	Jan	Feb	Mar	Apr	May	Jun	Jul
Weeks	1-4	5-8	9-13	14-17	18-22	23-26	27-30	31-34	35-39	40-43	44-47	48-52
2025-26	19,847	39,408	58,289	46,070	44,181	-	-	-	-	-	-	-
2024-25	28,103	37,927	55,870	41,829	42,324	30,188	25,580	34,401	51,849	37,116	31,941	29,346
3-Yr Avg.	22,036	35,860	54,460	41,189	41,773	28,601	29,124	32,312	46,300	32,165	26,762	33,141
Var % to Last Year	-29%	4%	4%	10%	4%							
Var % to 3-Yr Avg.	-10%	10%	7%	12%	6%							

## 4. Shipments

### 4-A Shipments from Port Terminals ('000 tonnes) – This Year-to-Date as at Week 22 and Variance to Last Year-to-Date

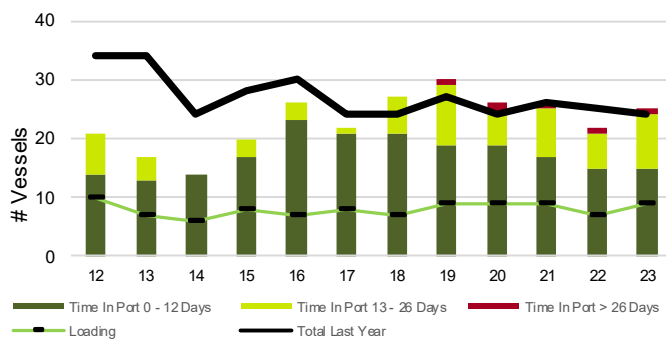
	Vancouver	Prince Rupert	West Coast	Thunder Bay	Churchill	Total
2025-26	13,352.5	2,019.2	15,371.7	3,922.2	-	19,293.9
2024-25	13,154.1	2,002.0	15,156.1	3,962.3	-	19,118.4
3-Yr Avg.	12,966.1	1,640.5	14,606.7	3,816.3	-	18,423.0
Var % to Last Year	2%	1%	1%	-1%	n/a	1%
Var % to 3-Yr Avg.	3%	23%	5%	3%	n/a	5%

### 4-B Weekly Shipments ('000 tonnes) from Port Terminals – This Year vs Last Year and the 3-Year Average

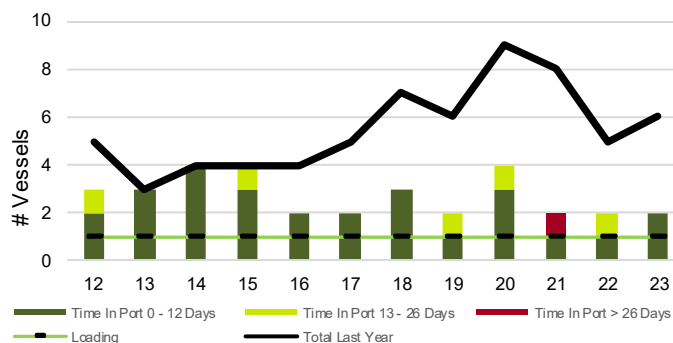


## 5. Vessels

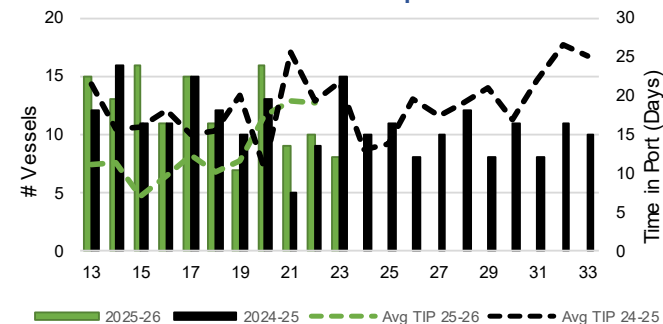
### 5-A Vessel Lineup at Vancouver as of Week 23 2025-26



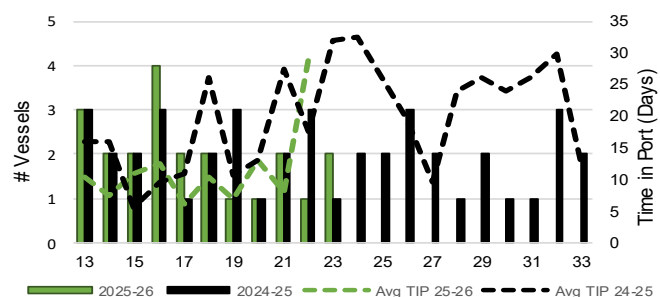
### 5-C Vessel Lineup at Prince Rupert as of Week 23 2025-26



### 5-B Vessels Cleared at Vancouver up to Week 23 2025-26



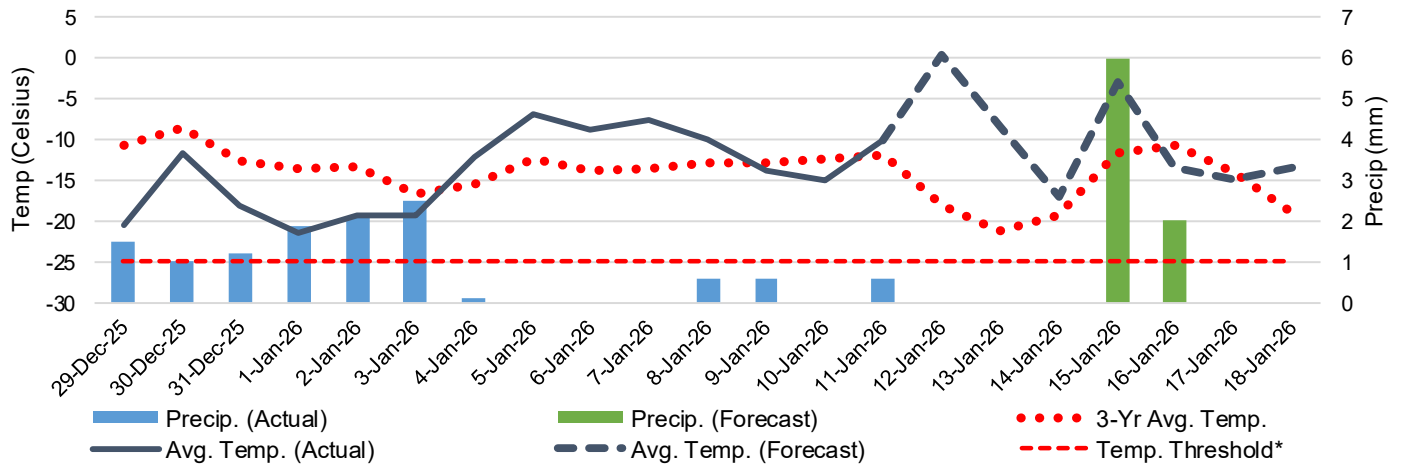
### 5-D Vessels Cleared at Prince Rupert up to Week 23 2025-26



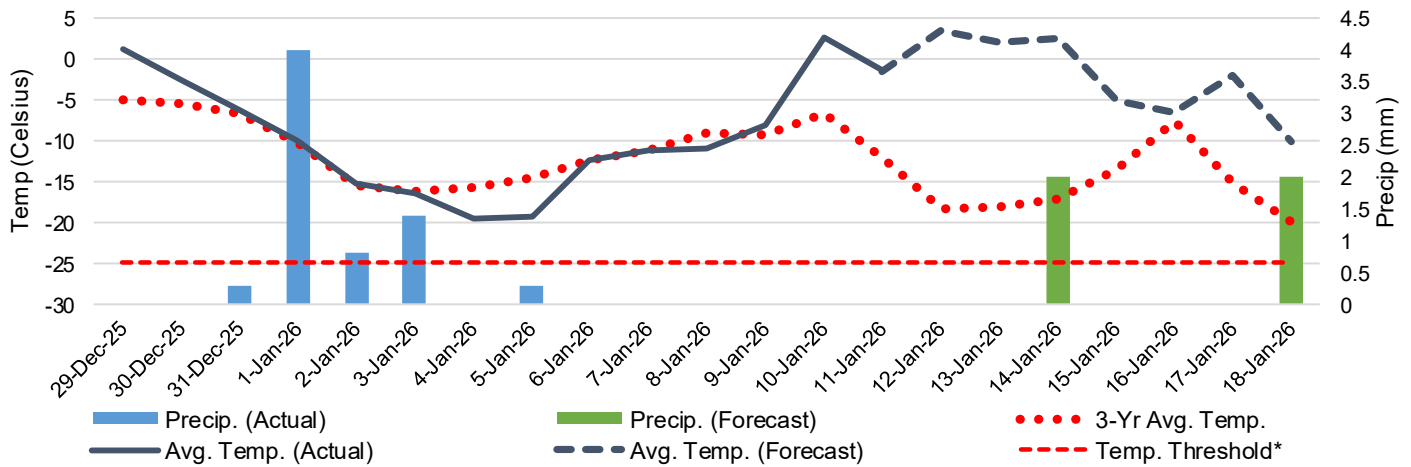
Note: The 'Time in Port' measure for 5-A and 5-C is calculated as how long each vessel in the lineup has been in port as at Sunday 23:59 of that grain week. The 'Avg Time in Port (TIP)' measure for 5-B and 5-D is the average number of days that all vessels which cleared that week were in port. These measures use vessel data provided by the BC Chamber of Shipping and Pacific Pilotage Authority.

## 6. Weather

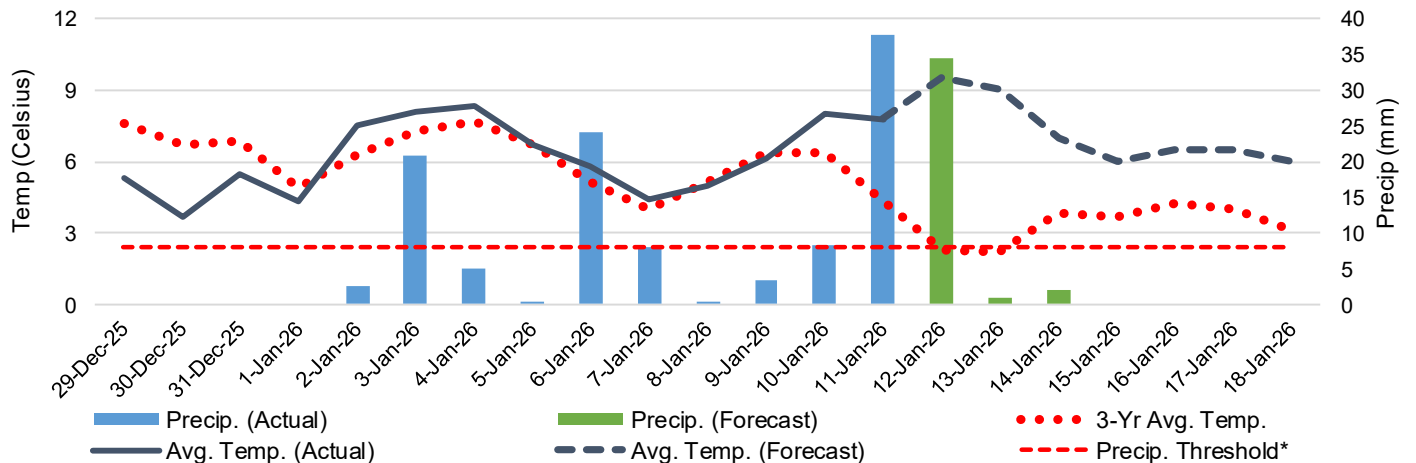
6-A Actual and Forecasted Weather at Winnipeg up to Week 24 2025-26



6-B Actual and Forecasted Weather at Edmonton up to Week 24 2025-26



6-C Actual and Forecasted Weather at Vancouver up to Week 24 2025-26



\*Note: Precip Threshold refers to 8mm of rain. At this level of precipitation, vessel loading may be delayed. The duration of the delay will be dependent on the ship, the duration of rainfall, and the amount of precipitation. 8mm is a general guideline and is not meant to be a definitive limit.  
Source: Environment and Climate Change Canada, The Weather Network (Forecast)